



Williams County Soil Conservation District

August

2024 Tree Season

Our season looked like it was going to start off early, but little did we know that it would rain on average about 3 times a week. This was a great year for planting trees with the abundant amount of rain early in the spring; but made this season challenging to try to get everything planted and weed barrier installed. As the season went on, we found ourselves trying to plant when we could in-between rain showers. Fabric season seemed to never end, between competing with the weeds and the frequent rain showers.

This was by far one of our most challenging tree seasons yet! Thank you to the producers that remained patient with us



as we tried to work around what mother nature threw at us this year. In the end we were able to install trees for 34 producers and planted 197,350 (37 miles) linear feet of trees and installed 188,971 (36 miles) linear feet of weed barrier. We also had 9 producers take advantage of our handplant service and installed 1,920 trees. Thank you to all the staff and seasonal help for making this tree season possible and enjoyable!



Volunteers Needed Ecological Education - (Eco-Ed) Days



Its that time of year again! We are looking for anyone that might be interested in volunteering for 1 day, 2 days, or 3 days to help run stations and moving kids from one station to another. This event will be September 10th - 12th. This event truly is a great day of memory making for each one of the students. It allows them to get hands on and learn about several different topics in such a fun way! As always, we appreciate any amount of time that you are able to volunteer! If you have any questions, please contact Molly for more information.





*goodbye
AND
goodluck
ON YOUR
NEXT
adventure*

It is with a heavy sigh that we say goodbye to our Technician, Christy Sperling. Christy has been with the District for a little over a year and half and has become very familiar with the producers in our country as well as helping them with their conservation needs.

She has been a joy to have in the office, from drawing up tree plans, helping with Eco-Ed pollinator boxes, playing chef, to driving tractor, she played many roles in the office. Your laugh and good sense of humor will be missed! We are so sad to see you go, but wish you nothing but the best in your next adventure!



District Services & Price List:

| | |
|--|-------------------------------|
| Machine Planting: (Includes Trees - Min. 1500ft) | \$35.00/hundred ft. |
| Machine Planting with Weed Barrier (Includes Trees — Min.1500ft) | \$100.00/hundred ft. |
| Handplant Replacement Service (Includes Trees). | \$4.00-5.00 Per Handplant |
| Fabric: 6' x 300' Roll | \$125.00 |
| Fabric: 6' x 500' Roll | \$175.00 |
| Staples Individual | \$0.17 Each |
| Staples Box (500) | \$85.00 |
| Casoron Application: (Fall) | \$18.00/hundred ft. |
| Plantskydd 1lb. Box | \$28.62 |
| Plantskydd 1.3 gal refill jug | \$61.43 |
| Plantskydd 1 qt. Pre-mixed | \$23.32 |
| Plantskydd 1lb granular | \$11.61 |
| Plantskydd 3.5 lb. granular shaker | \$29.63 |
| Plantskydd 20 lb. granular bag | \$119.73 |
| Poly-Pipe 1.5 inch | Call for Pricing/Availability |
| 1 1/2 inch compression fittings available in limited supplies for poly-pipe. | |

Rental Equipment:

| | |
|--|--------------|
| Shallow Pipeline Plow | \$0.25/ft. |
| 6 ft Frontier Drill | \$100.00/Day |
| 10 ft Truax Drill: (Min. 10 Acres) | \$12.50/Acre |
| 15 ft John Deere Drill | \$15.00/Acre |
| Custom Seeding: 30 ft Drill (Min. 40 Acres). | \$21.00/Acre |
| Post Pounder | \$200/Day |
| Tree Site Prep Service (Min. 2 hrs.) | \$75/hr. |



7th Annual Ladies Ag Night

ConVersation ~ n~ ConServation

Andrea Flemming



Andrea is a 5th generation farmer & entrepreneur from Southwest Minnesota. She originally had plans to become a large animal veterinarian, but those plans changed and she pivoted. She came back home to the family farm and joined in with her parents and husband. Andrea calls herself a "multi-passionate serial entrepreneur." She is passionate about a variety of things and loves the business adventure that comes along with entrepreneurship. She's a speaker, boutique co-owner, business coach, certified personal trainer and content creator online promoting agriculture to bridge the gap.

Wednesday, November 13, 2024
Must be 21 to attend

5:00 p.m. Social Hour
5:45 p.m. Dinner

Sharing her story in agriculture to bridge the gap & empower other women to live authentically



\$30 Registration due by November 1, 2024
at 1106 West 2nd Street
Williston, ND 58801
701-572-6729 ext. 3

Event Location: Williston ARC 822 18th Street East, Williston, ND

Farm to Table

This marked the 4th year for the Williston Area Chamber of Commerce Ag Committee hosting this Farm to Table event! The original farm site location had to be switched last minute due to the plethora of rain this spring. Graciously, Horizon Resources hosted this event at their fertilizer location in Williston. This year featured keynote speaker Michelle Miller aka the Farm Babe, talking about



the misconceptions of food labels from companies. A drone demonstration from Train ND –Northwest highlighted the benefits of spot spraying. Along with all this great entertainment, guests were able to enjoy a locally sourced menu from appetizers, to the main meal, to dessert. To accompany their meal, folks were able to try a brand new debuted beer from Busted Knuckle Brewery called "The Final Forty" along with other beers and wines that are made right here in our state. Guests in attendance also received generous gift bags as well as a customized beer glass. This event would not be possible without our generous sponsors, volunteers, and caterers that made this event possible! The Ag committee is looking forward to next years event being the best one yet!

Soil Health Regenerative Ag Tour

Over 50 people from across northwestern North Dakota participated in the Soil Health/Regenerative Ag Tour held on July 18 in the Minot area. The tour was organized by the Williams County Soil Conservation District and the Mountrail County Ag Agency. It was sponsored by the Soil Conservation Districts and Ag Improvement Associations in Williams, Mountrail, Divide, and Burke counties along with support from the NDSU Extension Service and Natural Resources Conservation Service.

The tour was targeted toward those interested in learning more about soil health and featured two farming operations that have transitioned to regenerative farming practices. While these two operations varied some in their approach to regenerative agriculture, they are both more focused on net returns per acre than yield and are both using soil health practices to increase soil biology as a driver of nutrient availability and plant health.

The first was Bock Farms which is located Northeast of Foxholm. Brandon and Jesse Bock started using regenerative agricultural principles several years ago and they are on a journey to heal their land. Brandon shared some of the lessons he's learned on his regenerative journey and how the continued application of the soil health principles is having a positive impact on their land, quality of life and their bottom line. While Bock's still use commercial fertilizer, they have been able to cut back on the amount they are applying significantly since beginning their regenerative journey. They also still keep crop protection products in their tool chest, but only use them very discriminately when absolutely necessary.



Brandon shared his direct costs per acre on the field we visited and even with the lower commodity prices we are currently experiencing, they should still be able to show a positive net return this year.

The second was Lozensky Farms south of Minot. Together, Kelly & DeAnna Lozensky, steward a 2200 acre no-till based, grain farm. They began transitioning into regenerative principles in 2013 and have since managed to eliminate seed treatments, all fertilizers, insecticides, fungicides, and pre-harvest desiccants.

Since 2019 their crops have been fed 100% by native soil biology, sunlight, and rain. Through a system they call IMOS (Indigenous Micro Organism Solution) they are focused on stimulating the soil biome and using soil biology to provide the majority of their crop inputs needs.



Kelly & DeAnna have also found new business opportunities through their no-till, regenerative farming operation by taking a portion of the bushels they grow and selling them directly to consumers, restaurants, and bakeries. This idea evolved into an emerging food brand called "Guardian Grains" where they now offer whole grains, stone-milled flour, and whole nutrition pasta produced from their grain. Kelly & DeAnna believe that human health, animal health, and planet health all depend on soil health.

Several participants on the tour indicated it was one of the best crop tours they had ever been on; so overall the tour would have to be considered a great success.



2025 Program Sign-up



Environmental Quality Incentives Program (EQIP) Technical & Financial Assistance for Installing Conservation Practices

- Water Well
- Grass Seeding
- Nutrient Management
- Irrigation
- Wildlife Habitat
- Tree Planting
- Tree Renovation
- Cover Crops
- Grazing System

Sign-up Deadline Friday, September 20th, 2024

Please stop by the Williston NRCS office
or call 701-572-6729 ext. 3 for more information.
NRCS will set up a time to meet with you for a field visit to begin the conservation
planning process. We look forward to working with you!

USDA is an equal opportunity provider and employer.

Machine Tree Plantings 2025

Now taking appointments for new tree plans



Things to consider

- Soil types
- Tree species
- Orientation of windbreak for best protection
- Width and density of windbreak
- Setback and easement restrictions
- Building distances
- Overhead wires
- Underground utilities/septic tanks/pipelines
- Water needs
- Mature size of tree
- Site preparation
- Livestock protection
- Fabric

Pricing:

Minimum amount billed is 1500 ft. whether footage is met or not

Machine tree planting (includes trees) \$.35 cents per foot.

Machine tree planting (includes trees) with 6ft wide conservation grade fabric installed \$1.00 per foot.
Any footage over the minimum amount is billed out accordingly to the prices listed above.

Site Preparation:

Site preparation is offered by the district. Tree plans must be completed before the ground freezes. District will need to be notified and a contract signed before the district will perform site prep. Sites must be initially broke up in the Fall

Pricing: \$75/hour
Minimum amount charged is \$150



Proper site prep is the responsibility of the producer

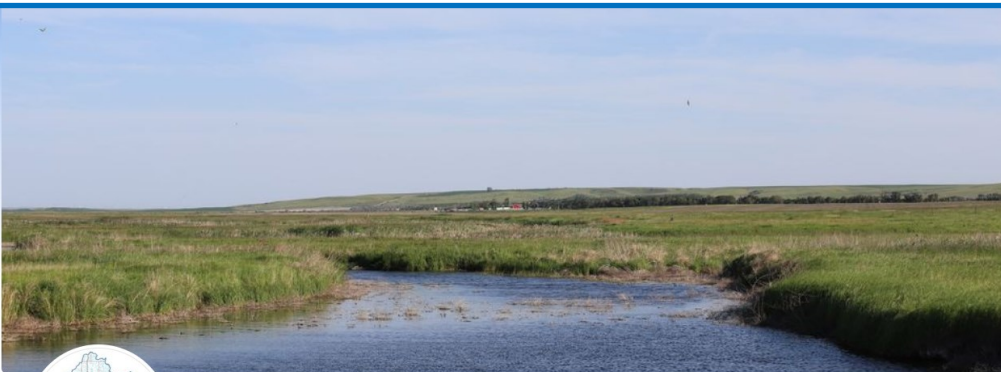
**Deadline to have a tree plan made and a site visit
from one of our staff members is Oct 25, 2024**



Call the Downtown Office:
701-572-6729 ext. 3

For more information call the
office or check out our website
at wmscoscd.com

Introducing our new "sister" Facebook page!!!

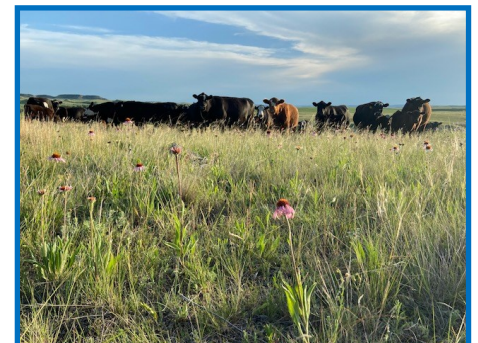
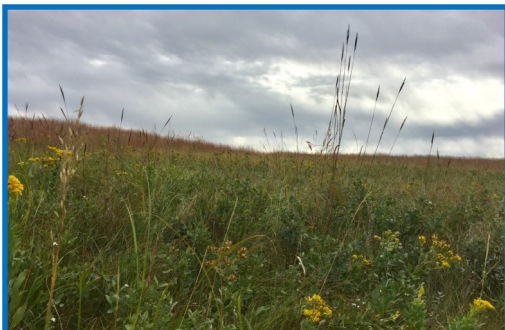


Little Muddy River Watershed Improvement Program

6 likes • 11 followers

As a part of the Watershed Program's environmental education efforts, we have introduced a new program Facebook page. On this page, you can find program updates, information on our cost-share offerings, and educational information on topics related to water quality and watershed health.

Additionally, the Little Muddy River Watershed Improvement Program is interested in featuring native rangeland in upcoming environmental educational materials. If you own or operate healthy native rangeland and would like to potentially be featured in articles, brochures, and presentations, please contact Isabella Sferra at williamscountyscd@gmail.com or at 858-333-1699 or the office at 701-572-6729 ext 3. We would love to showcase local producers and their conservation efforts!



JOIN OUR TEAM

Soil Conservation District Supervisor needed!!!

Williams County Soil Conservation District will have one position on the ballot in the November Election. The term for a Soil Conservation Supervisor is 6 years. In order to be eligible for election to the office of supervisor of a Soil Conservation District, candidates must be land occupiers and physically living in the district. Candidates must file with the Williams County Auditor. The deadline for filing is September 3, 2024 no later than 4 p.m. Candidates must file a petition/certification of nomination containing signatures equal to not less than 25 nor more than 300 qualified electors of the district.

- Have a passion for conservation?
- Want to have an active role in your community?
- Could make time for a meeting once a month?

Consider becoming a board member

WE NEED YOU!

For more information contact Molly @ 701-572-6729 ext 3

All sponsoring parties do not and shall not discriminate on the basis or race, color, religion (creed), gender expression, age, national origin (ancestry), disability, marital status, sexual orientation, or military status, in any of its activities or operations.



Custom Seeding

\$21.00 an acre



**Min. 40 acres &
Max. 160 acres**

Fall will be here before we know it and harvest is well under way. Whether you lack the time, equipment, or man power contact the District for your conservation seeding needs. Contact our office if you are looking for a seeding recommendation that will fit your operation needs. We are able to take care of your cover crop or grass seeding needs with our 30ft no till drill. Requirements include: a map of the area you want seeded, copy of the seed tags, and our custom seeding sheet signed. Stop in or give David a call before our slots fill up! Tree Shed Office: 701-774-2319

Williams County Soil Conservation District

We Are 

Hiring Technician

- Able/willing to drive tractor seasonally for tree plantings
- Ability to lift 50lbs
- Good organizational, verbal, and written skills
- Proficient in Microsoft excel, word, publisher, and PPT
- Ability to learn ARC-GIS
- Prepares & presents/assists with conservation programs for schools, groups, field tours, and news articles
- Assist with conservation practice design, layout, installation, & associated paperwork with district services and rental program
- Assist with coordinating district equipment & rental program
- Cooperate with NRCS personnel in carrying out conservation programs
- Able to pass a federal background check
- Job requires long working days in the spring/early summer

Office Hours: 8 a.m. - 4:30 p.m. Monday - Friday

Position includes: 13 paid holidays, annual leave, sick leave, & life insurance

Employer fully paid health insurance, vision, and retirement

Starting wage \$22.50/ hr



Apply Now

 molly.jugovic@nd.nacdnet.net



wmcoscd.com



701-572-6729 ext 118

All sponsoring parties do not and shall not discriminate on the basis of race, color, religion (creed), gender expression, age, national origin (ancestry), disability, marital status, sexual orientation, or military status, in any of its activities or operations.



Williams County Soil Conservation District
1106 W 2nd Street
Williston, ND 58801
Phone: 701-774-2319

NON PROFIT
US POSTAGE PAID
PERMIT #94
WILLISTON, ND 58801

RETURN SERVICE REQUESTED

District Staff:

District Manager: Molly Jugovic
Equipment Manager: David Telck
Watershed Coordinator: Isabella Sferra
Soil Health & Cropping System Specialist:
Keith Brown
District Clerk: Ramona McLean

Board of Supervisors

Donald Anderson
Blake Wheeler
Evan Whiteford
TJ Halverson
Ryan Davidson

NRCS Staff:

District Conservationist: Malinda Ferguson
Management Program Analyst: Cindy Simpson

Office Happenings

Our office is still trying to figure out where spring and summer has disappeared to! Many new and exciting changes have taken place in the last month. Cindy Simpson our contract secretary has accepted a job with NRCS as our Management Program Analyst. Our Soil Conservation District manager Molly got married on July 27. Christy is leaving our team and headed on her next adventure.



All sponsoring parties do not and shall not discriminate on the basis or race, color, religion (creed), gender expression, age, national origin (ancestry), disability, martial status, sexual orientation, or military status, in any of its activities or operations.